

SPONSORSHIP INFORMATION

CAMPUS SUPERSTAR 2018



Hillel

The Edward and Rose Berman
Hillel Jewish University Center
of Pittsburgh

ABOUT CAMPUS SUPERSTAR



What is Campus Superstar?



- A HIGH-CALIBER SOLO SINGING COMPETITION FEATURING OUR REGION'S MOST TALENTED COLLEGE STUDENTS
- \$5,000 ELLEN WEISS KANDER GRAND PRIZE
- PROCEEDS PROVIDE OPPORTUNITIES FOR JEWISH STUDENTS AND YOUNG ADULTS TO MAKE PITTSBURGH THEIR HOME



Fast Facts



- CAMPUS SUPERSTAR IS THE ONLY EVENT IN PITTSBURGH TO CELEBRATE THE EXTRAORDINARY TALENT OF LOCAL STUDENTS.
- COUNTLESS PAST CONTESTANTS ARE HAVING INCREDIBLE SUCCESS IN TELEVISION, FILM, AND ON BROADWAY.
- CAMPUS SUPERSTAR 2018, HOSTED BY HILLEL JUC, IS THE 12TH ANNUAL PRODUCTION.



About Hillel JUC

THE EDWARD AND ROSE BERMAN HILLEL JEWISH UNIVERSITY CENTER (HILLEL JUC) IS THE CENTER OF JEWISH LIFE FOR STUDENTS FROM CARNEGIE MELLON UNIVERSITY, THE UNIVERSITY OF PITTSBURGH, DUQUESNE UNIVERSITY, AND OTHER AREA COLLEGES AND UNIVERSITIES, SERVING AN ESTIMATED 2,500 UNDERGRADUATE STUDENTS. FOR A DIVERSE MARKET OF STUDENTS FROM VARIOUS BACKGROUNDS AND INTERESTS, THE HILLEL JUC PROVIDES A NURTURING ENVIRONMENT WHERE STUDENTS CAN BOTH EXPLORE AND PARTICIPATE IN THE VIBRANT WORLD OF JEWISH LIFE ON CAMPUS.

BASED ON THE PREMISE THAT COLLEGE LIFE INVOLVES MUCH MORE THAN ATTENDING CLASSES, THE HILLEL JUC PROVIDES THE ENVIRONMENT AND TOOLS THAT EMPOWER STUDENTS TO HELP SHARE THEIR FUTURE AS JEWISH YOUNG ADULTS. OUR STUDENT-DESIGNED AND STUDENT-LED PROGRAMS CHALLENGE THEM TO LEARN AND GROW, CHOOSING FROM AN ARRAY OF RELIGIOUS, CULTURAL, POLITICAL, AND SOCIAL OPTIONS.

BY ENGAGING AND EMPOWERING STUDENTS TO HELP CREATE THEIR OWN CENTER FOR JEWISH LIFE ON CAMPUS, THE HILLEL JUC SERVES AS A TRAINING GROUND FOR FUTURE JEWISH LEADERS AND COMMITTED MEMBERS OF THE COMMUNITY.



ALL ACCESS SPONSORSHIP LEVELS

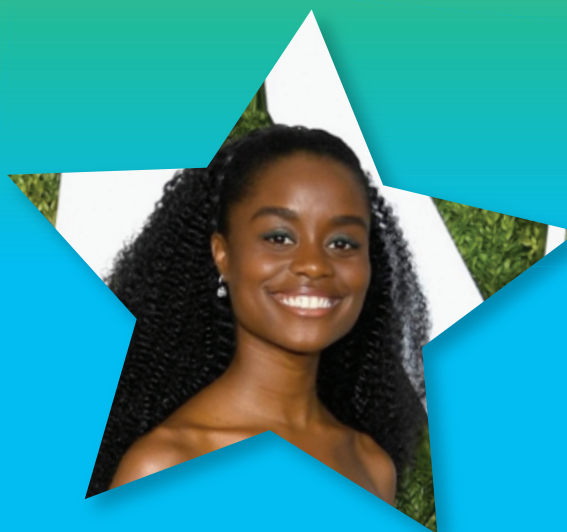
	NIGHT OF EVENT	PRINT RECOGNITION	DIGITAL RECOGNITION
THE HEADLINER \$25,000	<ul style="list-style-type: none"> • LOGO ON SPONSORSHIP SIGNAGE • LOGO ON ELECTRONIC SPONSOR REEL • 15 BENEFACTOR TICKETS • ADMITTANCE TO VIP AFTER PARTY 	<ul style="list-style-type: none"> • LOGO LISTING ON ALL PRINTED PUBLICITY • LISTING IN ALL PRESS RELEASES • FULL-PAGE HEADLINER LEVEL AD IN THE PLAYBILL • LOGO LISTING ON BACK OF PLAYBILL 	<ul style="list-style-type: none"> • LOGO LISTING ON WEBSITE BANNER • WEBSITE LISTING WITH LOGO AND HYPERLINK • LOGO LISTING ON ALL EMAIL PUBLICITY
PLATINUM RECORD SPONSOR \$10,000	<ul style="list-style-type: none"> • LOGO ON SPONSORSHIP SIGNAGE • 12 BENEFACTOR TICKETS • ADMITTANCE TO VIP AFTER PARTY 	<ul style="list-style-type: none"> • FULL-PAGE PLATINUM LEVEL AD IN THE PLAYBILL • LOGO LISTING ON ALL PRINTED PUBLICITY 	<ul style="list-style-type: none"> • WEBSITE LISTING WITH LOGO AND HYPERLINK
GOLD RECORD SPONSOR \$5,000	<ul style="list-style-type: none"> • LOGO ON SPONSORSHIP SIGNAGE • 10 BENEFACTOR TICKETS • ADMITTANCE TO VIP AFTER PARTY 	<ul style="list-style-type: none"> • FULL-PAGE GOLD LEVEL AD IN THE PLAYBILL 	<ul style="list-style-type: none"> • WEBSITE LISTING WITH LOGO AND HYPERLINK
SILVER RECORD SPONSOR \$2,500	<ul style="list-style-type: none"> • LOGO ON SPONSORSHIP SIGNAGE • 6 BENEFACTOR TICKETS • ADMITTANCE TO VIP AFTER PARTY 	<ul style="list-style-type: none"> • FULL-PAGE SILVER LEVEL AD IN THE PLAYBILL 	<ul style="list-style-type: none"> • WEBSITE LISTING WITH LOGO AND HYPERLINK
BRONZE RECORD SPONSOR \$1,500	<ul style="list-style-type: none"> • LOGO ON SPONSORSHIP SIGNAGE • 4 BENEFACTOR TICKETS • ADMITTANCE TO VIP AFTER PARTY 	<ul style="list-style-type: none"> • FULL-PAGE BRONZE LEVEL AD IN THE PLAYBILL 	<ul style="list-style-type: none"> • WEBSITE LISTING
RECORDING ARTIST SPONSOR \$750	<ul style="list-style-type: none"> • LOGO ON SPONSORSHIP SIGNAGE • 2 BENEFACTOR TICKETS • ADMITTANCE TO VIP AFTER PARTY 	<ul style="list-style-type: none"> • HALF-PAGE RECORDING ARTIST LEVEL AD IN THE PLAYBILL 	<ul style="list-style-type: none"> • WEBSITE LISTING

PAST CONTESTANT HALL OF FAME

CAMPUS SUPERSTAR FEATURES TOP PERFORMERS WHO HAVE GONE ON TO BROADWAY AND BEYOND...



Amanda Jane Cooper, 2009 FINALIST, IS CURRENTLY STARRING AS GLINDA IN THE BROADWAY PRODUCTION OF WICKED, HAVING PREVIOUSLY STARRED IN THE MUSICAL'S NATIONAL TOUR. AMANDA HAS ALSO BEEN SEEN ON GLEE, DISNEY'S JESSIE, ABC'S SELFIE, AND HBO'S HELLO LADIES.



Denée Benton, 2012 FINALIST, DENEÉ WAS NOMINATED FOR THE 2017 TONY AWARD FOR BEST ACTRESS IN A MUSICAL FOR NATASHA, PIERRE & THE GREAT COMET OF 1812!



Lilli Passero, 2009 SECOND RUNNER UP, WAS A FINALIST IN NBC'S THE VOICE SEASON 12.



Corey Cott, 2009 FINALIST, STARRED IN BROADWAY'S PRODUCTION OF NEWSIES AND MOST RECENTLY BEGAN THE ROLE OF DONNY NOVITSKI IN THE BROADWAY MUSICAL BANDSTAND.

THESE REPRESENT ONLY A FEW CONTESTANTS WHO HAVE GONE ON TO DO GREAT THINGS. THE HILLEL JUC AND CAMPUS SUPERSTAR ARE PROUD TO HAVE BEEN A PART OF SO MANY OF THESE SUCCESS STORIES.

412-621-8875 OR WWW.CAMPUSSUPERSTAR.ORG